

SUBJECT-BASED BANDING (PRIMARY)

OFFERING DIFFERENT SUBJECT COMBINATIONS



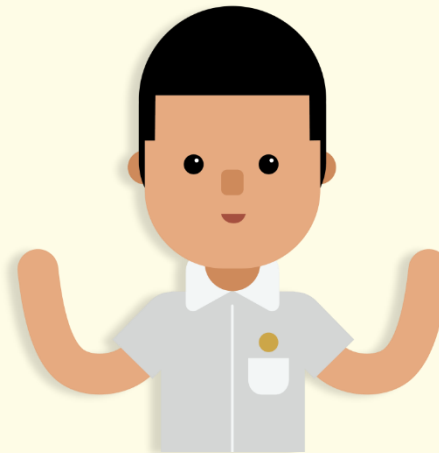
SUBJECT-BASED BANDING (PRIMARY)

- Offers students the option of Standard and Foundation Subjects, depending on their strengths.
- Allow students to focus on and stretch their potential in the subjects they are strong in while building up the fundamentals in the subject they need more support in.
- The new PSLE scoring system will not change the considerations for deciding on a student's subject combination at P4/ P5.



SUBJECT-BASED BANDING (PRIMARY)

- Schools will continue to recommend based on the following:
 - Student's aptitude, motivation and performance in each subject;
 - Student's ability to cope with a particular subject combination; and
 - Whether the subject combination focuses sufficiently on literacy and numeracy and facilitates the student's articulation to secondary school and beyond.
- Offering subjects at Foundation level is not a disadvantage to the students. It enables them to focus on building up strong fundamentals in these subjects and better prepares them for progression to secondary school.





*Confident
Learners,
Caring
Contributors*

Subject Based Banding (SBB)

- Provides flexibility in the offering of a combination of standard and foundation subjects
- Considers strengths of the child.



*Confident
Learners,
Caring
Contributors*

Subject Based Banding (SBB)

**Your child may be recommended
to take at P6**

- 4 standard subjects + Higher Mother Tongue Language
- 4 standard subjects

Examples of other subject combinations

3 standard subjects + 1 other foundation subject or
2 standard subjects + 2 foundation subjects; or
1 standard subject + 3 other foundation subjects; or
4 foundation subjects



*Confident
Learners,
Caring
Contributors*

How does SBB Work?

@ PRIMARY 4

Student sits for
school-based examinations

School recommends a subject
combination based on the
student's results.

Parents fill up an option form
indicating the preferred combination.

@ PRIMARY 5

Student takes subject
combination chosen
by parents

English Language, Mathematics,
Science and Mother Tongue
Language are available at
standard and foundation levels.

Higher Mother Tongue Language is
also available.

School assesses student's ability to
cope with the current subject
combination at the end of the year.
Adjustments to the number of
standard and foundation subjects can
be made, if necessary.

@ PRIMARY 6

Student takes subject
combination decided by his
school and sits for the
Primary School Leaving
Examination (PSLE) at the
end of Primary 6.

PSLE SCORING



Confident Learners, Caring Contributors

WHAT IS THE INTENT OF THE PSLE?



A useful checkpoint at the end of primary school

A fair way to determine secondary school posting



Over the years, we have been changing the education system to help our students discover and develop their strengths, interests, abilities and talents while moving away from an over-emphasis on academic results. Our PSLE Scoring system reduces the over-emphasis on academic results by:

1

Reducing fine differentiation of students' examination results at a young age.

2

Recognising a student's level of achievement, regardless of how his/her peers have done.

3

Encouraging families to choose secondary schools holistically based on students' strengths, interests and learning needs.

WHAT ARE ACHIEVEMENT LEVELs (AL)?

WHY ARE THE BANDS UNEVEN?

- Students with similar scores in each subject are grouped into scoring bands measured in 8 ALs.
- AL bands and mark ranges are set based on the learning objectives of the curriculum, and mirror the way we learn.

When we learn something new, after some initial practice, we often find ourselves improving significantly.


As we get better, the improvements become small steps, and finally, as we reach a high level, we inch just a little further, even after much learning and practice.

The ALs were designed to reflect this reality of learning. They help educators, students, and parents know how ready students are to access the curriculum at the next level.

| AL | RAW MARK RANGE |
|----|----------------|
| 1 | ≥ 90 |
| 2 | 85 – 89 |
| 3 | 80 – 84 |
| 4 | 75 – 79 |
| 5 | 65 – 74 |
| 6 | 45 – 64 |
| 7 | 20 – 44 |
| 8 | < 20 |

HOW DOES THE PSLE SCORING SYSTEM WORK?

- The overall PSLE Score is made up of 4 subject Achievement Levels (ALs).
- The PSLE Score can range from 4 to 32, with 4 being the best.



| Elena | | PSLE Score 14 |
|------------------------|----------|---------------|
| PSLE Subject | AL Score | |
| English | 2 | |
| Math | 2 | |
| Foundation Science | AL A = 6 | |
| Mother Tongue Language | 4 | |

GRADING OF FOUNDATION SUBJECT GRADES

- Foundation subject grades are graded in scoring bands from **AL A to C**.
- To derive a student's overall PSLE Score for S1 Posting, AL A to AL C for Foundation level subjects are **mapped to AL 6 to AL 8 of Standard level subjects respectively**.
- This mapping is based on the learning and assessment load of the subjects, and informs students of how ready they are for the curriculum in secondary school.

| FOUNDATION LEVEL AL | FOUNDATION RAW MARK RANGE | EQUIVALENT STANDARD LEVEL AL |
|------------------------|------------------------------|------------------------------------|
| A | 75 – 100 | 6 |
| B | 30 – 74 | 7 |
| C | < 30 | 8 |



NEW

ELIGIBILITY FOR HMTL IN SECONDARY SCHOOLS

- To take HMTL in secondary schools, students should meet the following criteria:

ELIGIBILITY CRITERIA FOR HMTL

PSLE MTL score of AL1/AL2

or

HMTL score of Distinction/Merit

- Schools also have the flexibility to allow students who do not meet the above criteria to take HMTL, if they are assessed to have exceptional ability in MTL and are able to take HMTL without affecting their performance in other subjects.

Understanding Full Subject-Based Banding (Full SBB)



What is Full SBB?

WHAT IS FULL SBB?

- Full SBB will be implemented in secondary schools from 2024, and aims for students to:



Have greater ownership of their learning according to their strengths, interests, abilities, talents and learning needs.



Develop a growth mindset and an intrinsic motivation to learn for life.

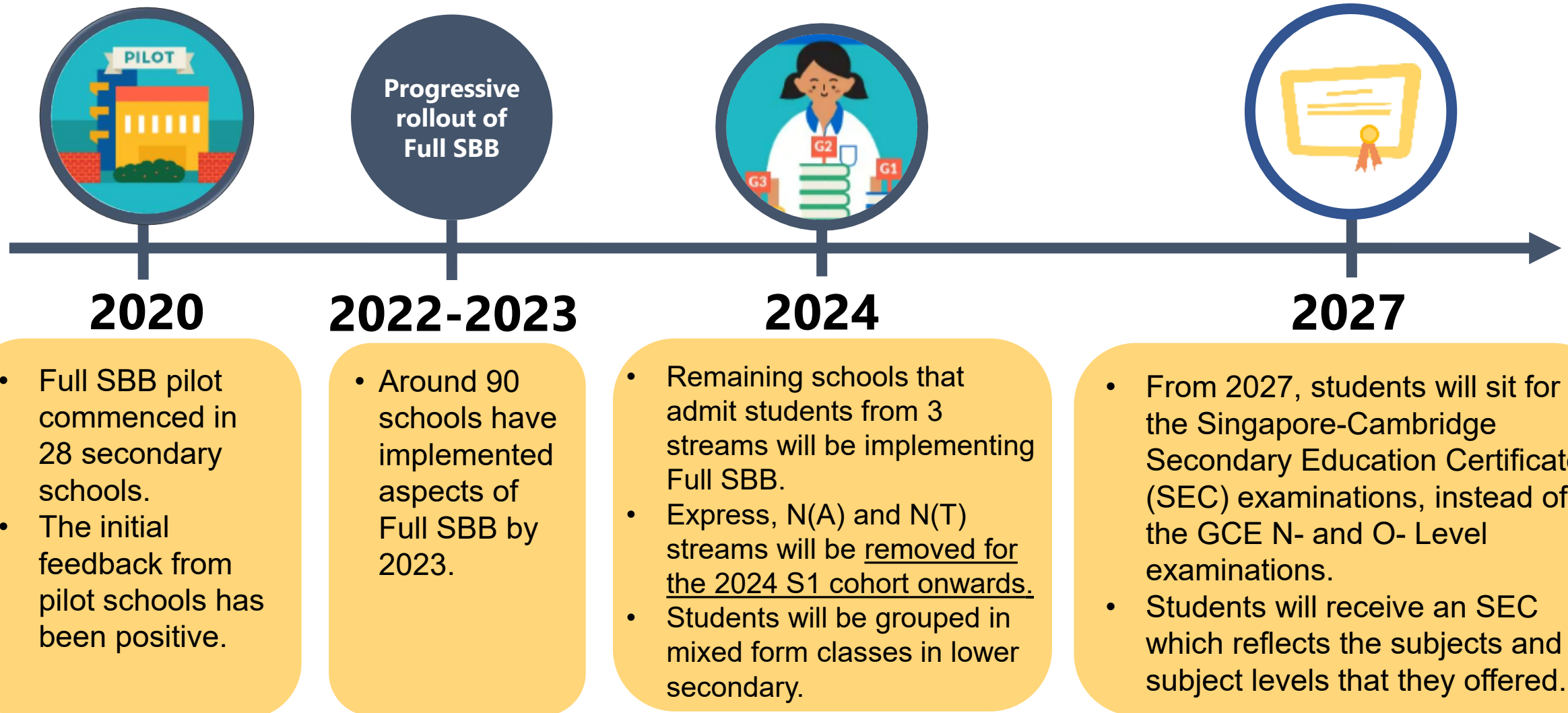


Have more opportunities to interact with friends of different strengths, interests, abilities and talents.



Have more options for post-sec pathways, while ensuring they have strong fundamentals and can thrive in their chosen pathway.

FULL SUBJECT-BASED BANDING (FULL SBB)



FULL SUBJECT-BASED BANDING (FULL SBB)

Secondary school experience under Full SBB

- **Mixed form classes** and **common curriculum subjects** at **Lower Secondary**.
- **Subjects to be offered at G1, G2 or G3**, mapped from the standards of the N(T), N(A) and Express subject levels respectively.
- **Greater flexibility** to customise students' learning by offering subjects at various subject levels.
- **Shift away from stream-based subject offerings.**

After PSLE

Start of Sec

End of Sec

Post Sec

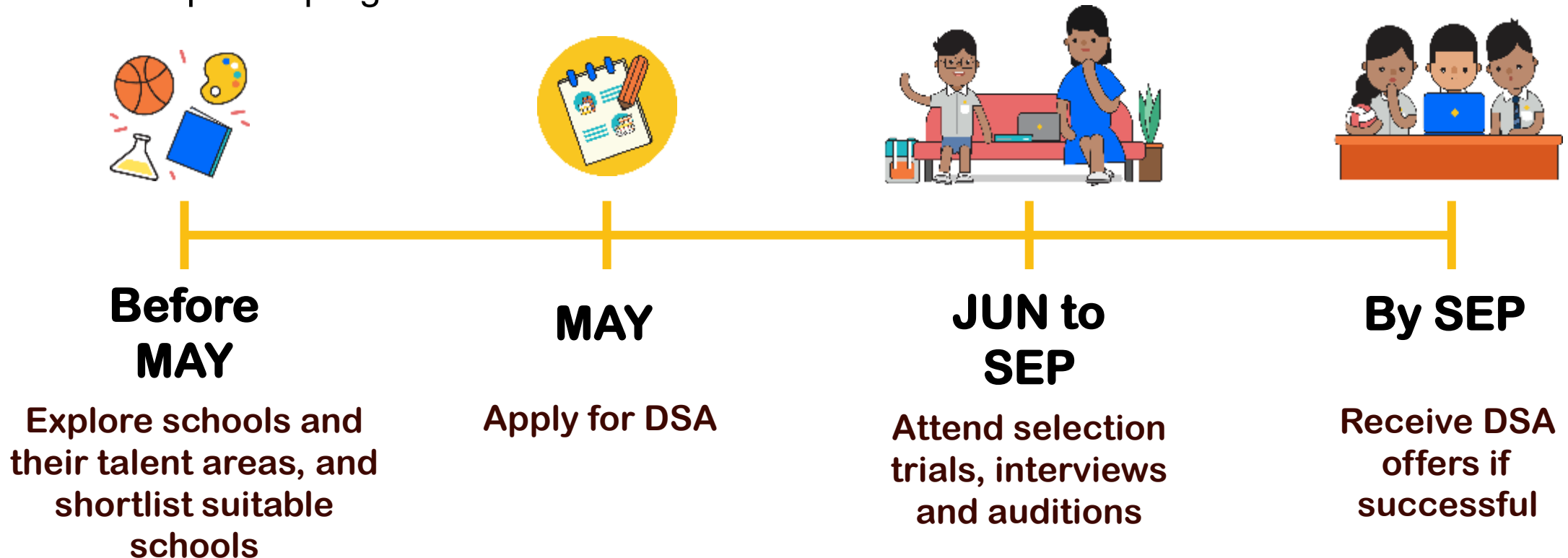
From 2023:
Entry to S1
through 1 of 3
Posting Groups

From 2027:
Singapore-Cambridge
Secondary Education
Certificate (SEC)
examination

Updated post-
secondary admission
criteria

ENTERING SCHOOLS THROUGH DSA-SEC

- There is no change to the application and selection process with the shift to Full SBB.
- If your child has specific talents and strengths beyond the PSLE (e.g. areas such as sports, performing arts and leadership), consider the **Direct School Admission-Secondary (DSA-Sec)** as an alternative admission pathway to access secondary schools that have talent development programmes in these areas.



FIND OUT MORE ON THE PSLE-FSBB MICROSITE



<https://go.gov.sg/pslefsbb>



EXPLORE YOUR FULL SBB PATH



<https://go.gov.sg/my-fsbb-path>

OTHER RESOURCES

SchoolFinder Tool

**SCHOOL
FINDER**



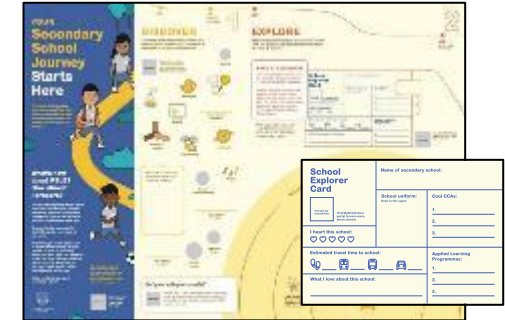
<https://go.gov.sg/secschoolfinder>

“Welcome to Secondary School” video



<https://go.gov.sg/welcome-to-secondary-school>

Student Journey Map and School Explorer Card



<https://go.gov.sg/psle-student-journey>

OTHER RESOURCES

ECG Tips For Parents



<https://go.gov.sg/tips-for-parents>

MySkillsFuture Student Portal (Primary)



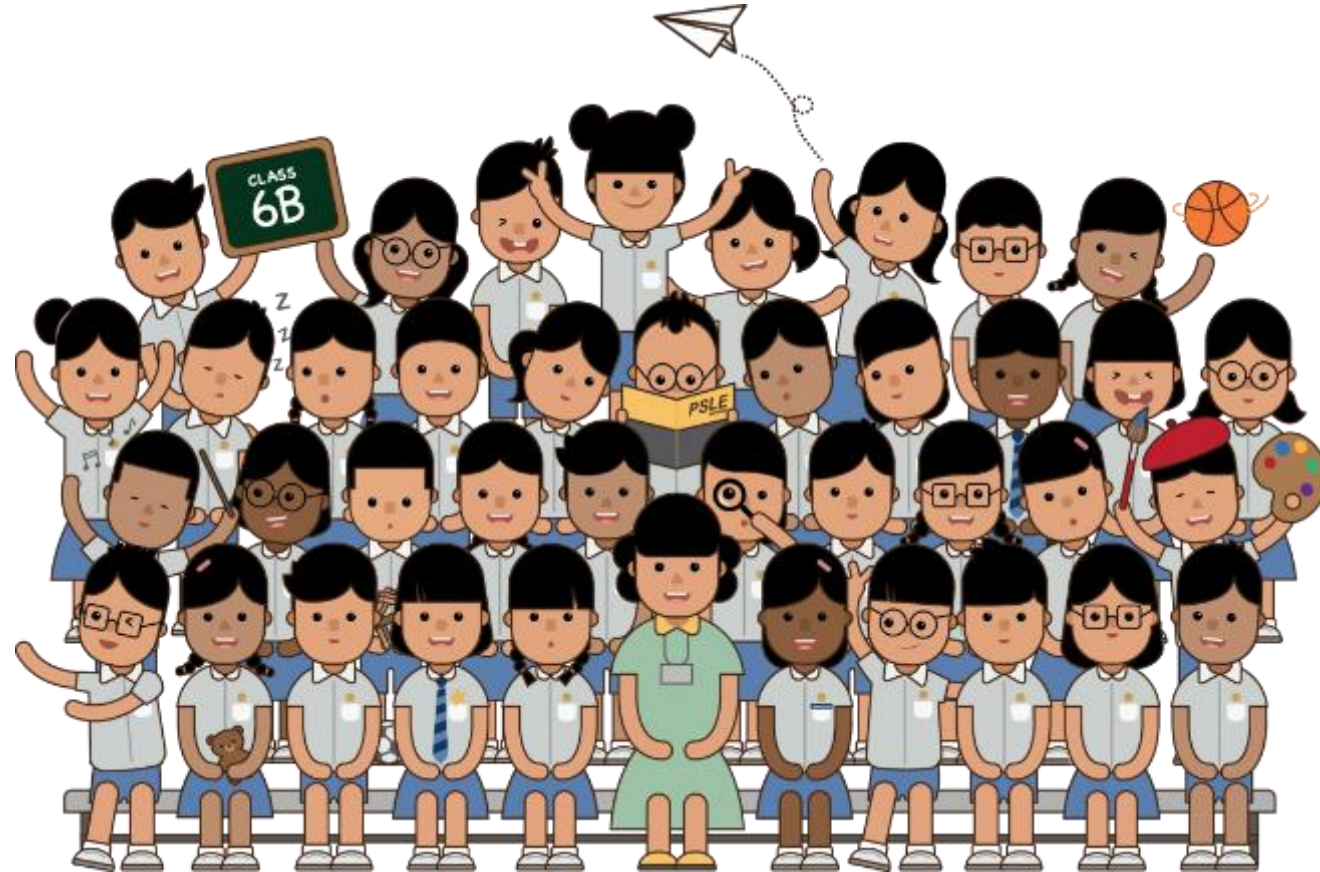
<https://go.gov.sg/mysfpri>

ECG What's Next



<https://go.gov.sg/what-s-next-psle>

THANK YOU



thank
you



Confident Learners, Caring Contributors